

Welcome to Philippines !

- [What is Taal?](#)
- [Informations & Background](#)

What is Taal?

Introduction

This map is still in dev phase and no one is allowed to host this map on a server.

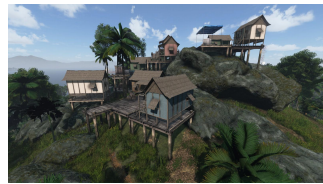


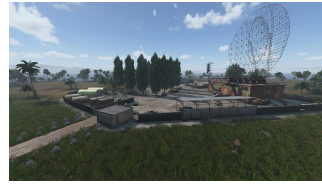
Taal is a fantasy map based on a real 12 × 12 km area around the [Taal volcano](#) in the Philippines. As a fantasy map, some aspects may be close to reality, but certain liberties have been taken for technical, financial, and gameplay reasons.

The map is designed to be a challenging survival environment with low loot, ever-present environmental hazards such as the infected, but also pandas and dholes that will make your life miserable. Its size of 12 x 12 km (144 km²) dotted with islands allows for compartmentalized gameplay that will delight try-harder and demanding player communities.

Discover the events leading up to the chaos, fight humans and infected predators, and protect yourself from the unforgiving environment by escaping earthquakes, acid rain, and tropical storms.

Preview





Informations & Background

Technical Specs

Terrain Size	12x12km (144km ²)
Resolution / Accuracy	1m/px
Heightmap Size	4096
Cell Size	3
Sat/Mask tiles size	512px
Texture layer size	40px
Overlap	64px

- **CFTools Cloud** : *Compatible*
- **iZurvive** : *Not Available*
- **Release** : *Private - Still in Dev*
- **Status** : *Not Released*
- **Workshop** : [Taal - Volcano Island](#)

Spirit & Gameplay

This map is oriented on pure survival aspect, with low loot, few buildings and virtually no roads. As a volcanic zone, there are plenty of surprises in store for the more adventurous... but you can also count on aggressive fauna...

Background

“ It's 2082, and the volcanic island of Taal and the islets around it south of Manila have been used since 2035 as a natural penitentiary and quarantine island due to the explosion of crime in the Philippines.

Since 2051, the highly active Taal volcano has been monitored by PHILVOLCS (Volcanic Institute of Philippines). It spews clouds of high-temperature sulfur oxide gas and water vapor, although localized eruptions of compacted lava can occur. The island became a plant paradise after being re-vegetated several times in the past, following eruptions in 1969, January 2021 and March 2022, it was evacuated in 2050.

The Philippine army has complexes on the surrounding islands, which emerged from the sea in the 2030s. Will you be able to find peace in a world where nature is out to get you?