

# What is Taal?

## Introduction

**This map is still in dev phase and no one is allowed to host this map on a server.**

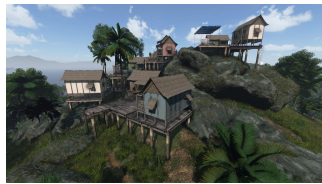


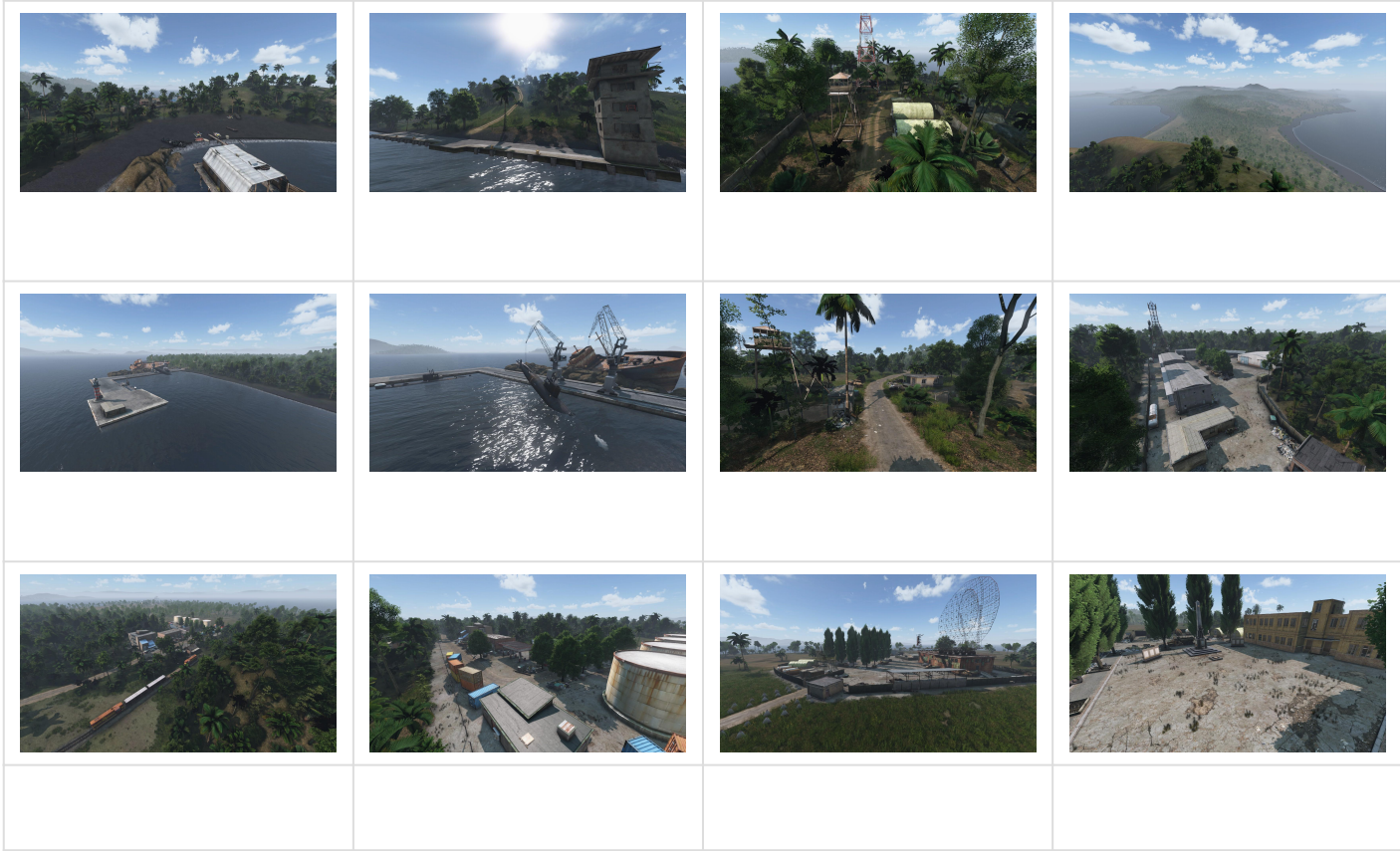
Taal is a fantasy map based on a real  $12 \times 12$  km area around the [Taal volcano](#) in the Philippines. As a fantasy map, some aspects may be close to reality, but certain liberties have been taken for technical, financial, and gameplay reasons.

The map is designed to be a challenging survival environment with low loot, ever-present environmental hazards such as the infected, but also pandas and dholes that will make your life miserable. Its size of  $12 \times 12$  km ( $144 \text{ km}^2$ ) dotted with islands allows for compartmentalized gameplay that will delight try-harder and demanding player communities.

Discover the events leading up to the chaos, fight humans and infected predators, and protect yourself from the unforgiving environment by escaping earthquakes, acid rain, and tropical storms.

## Preview





Revision #4

Created 2026-02-20 18:05:55 CET by Hellmaker2a

Updated 2026-03-09 17:10:27 CET by Hellmaker2a